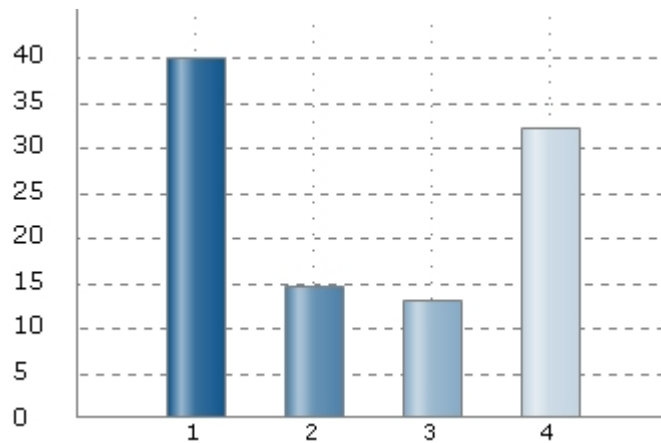


Hvem er mest...

1. Jeg er...

Answered by: 585 (81%) Not answered by: 138 (19%)

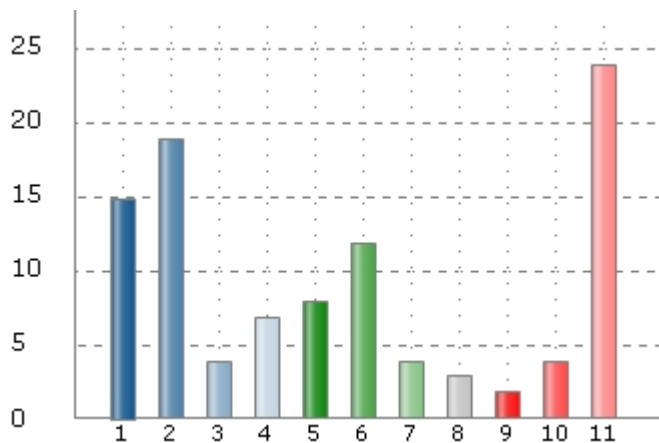
1	Læge	234 (40%)
2	Sygeplejerske	86 (15%)
3	Medicinstuderende	77 (13%)
4	Andet	188 (32%)



2. Hvad er er dit speciale

Answered by: 231 (32%) Not answered by: 492 (68%)

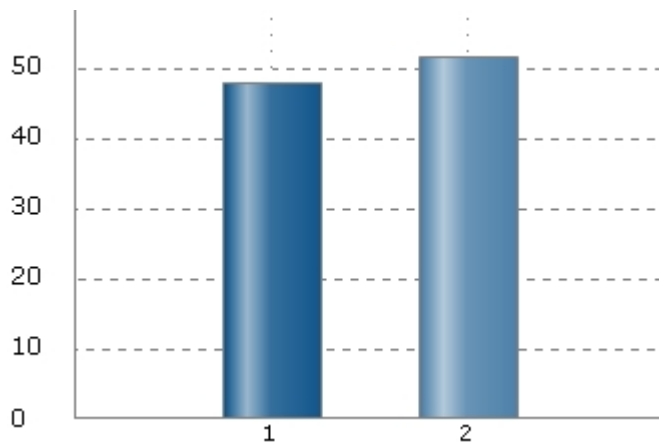
1	Almen mediciner	34 (15%)
2	Intern mediciner	43 (19%)
3	Psykiater	9 (4%)
4	Ortopædkirurg	16 (7%)
5	Organkirurg	18 (8%)
6	Anæstesiolog	27 (12%)
7	Gynækolog/obstetriker	10 (4%)
8	Pædiater	6 (3%)
9	Endokrinolog	5 (2%)
10	Patolog	9 (4%)
11	Andet	55 (24%)



3. Dit køn?

Answered by: 579 (80%) Not answered by: 144 (20%)

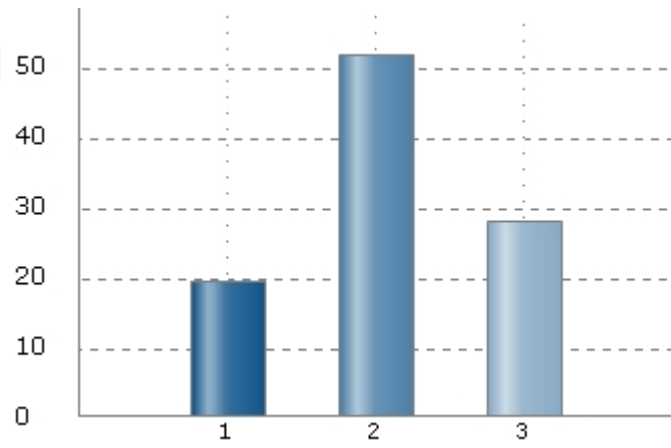
1	Kvinde	279 (48%)
2	Mand	300 (52%)



4. Din alder?

Answered by: 575 (80%) Not answered by: 148 (20%)

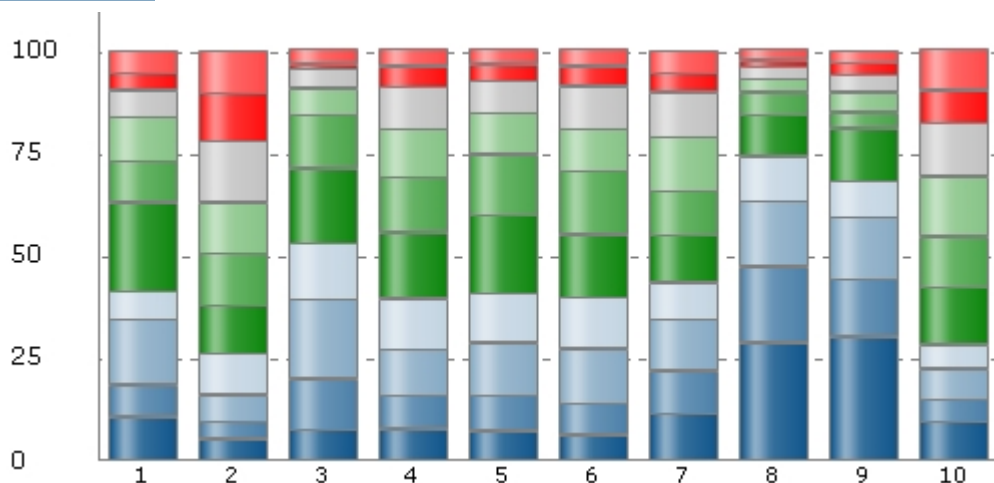
1	< 30 år	113 (20%)
2	30-50 år	299 (52%)
3	> 50 år	163 (28%)



5. Hvem er de mest charmerende?

Giv karakter til hvert speciale fra 1 til 10, hvor 1 er mindst og 10 er mest

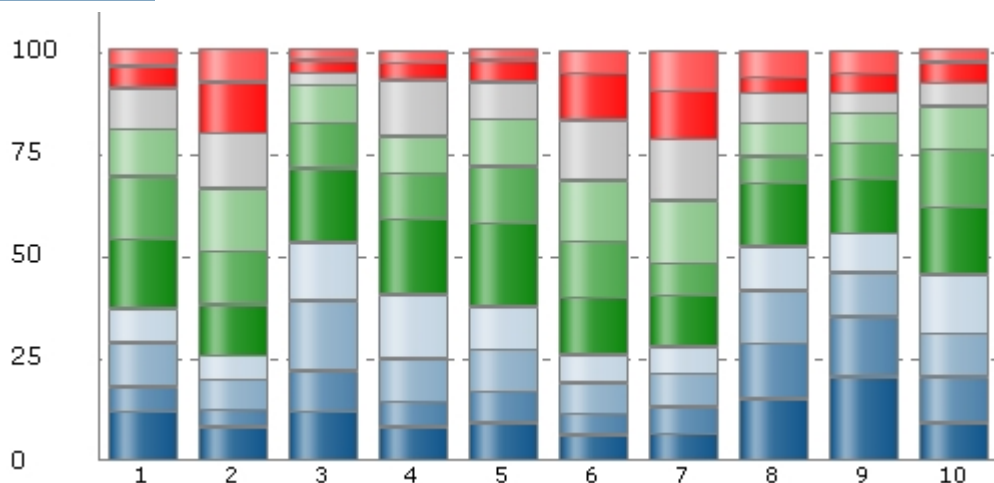
	1	2	3	4	5	6	7	8	9	10	Responses
1 Almen Medicinere	42 (11%)	30 (8%)	64 (16%)	28 (7%)	86 (22%)	40 (10%)	43 (11%)	26 (7%)	17 (4%)	22 (6%)	398/723 (55%)
2 Anæstesiologer	21 (5%)	17 (4%)	26 (7%)	39 (10%)	47 (12%)	51 (13%)	49 (12%)	59 (15%)	47 (12%)	42 (11%)	398/723 (55%)
3 Endokrinologer	30 (8%)	49 (12%)	77 (19%)	55 (14%)	72 (18%)	52 (13%)	26 (7%)	18 (5%)	5 (1%)	14 (4%)	398/723 (55%)
4 Gynækologer/obstetrikere	31 (8%)	32 (8%)	45 (11%)	49 (12%)	63 (16%)	54 (14%)	47 (12%)	41 (10%)	20 (5%)	16 (4%)	398/723 (55%)
5 Interne medicinere	28 (7%)	35 (9%)	51 (13%)	48 (12%)	76 (19%)	59 (15%)	40 (10%)	32 (8%)	16 (4%)	14 (4%)	399/723 (55%)
6 Organkirurger	24 (6%)	31 (8%)	53 (13%)	50 (13%)	61 (15%)	61 (15%)	41 (10%)	42 (11%)	18 (5%)	17 (4%)	398/723 (55%)
7 Ortopædkirurger	46 (12%)	41 (10%)	49 (12%)	36 (9%)	46 (12%)	43 (11%)	53 (13%)	43 (11%)	19 (5%)	22 (6%)	398/723 (55%)
8 Patologer	114 (29%)	73 (18%)	64 (16%)	44 (11%)	40 (10%)	22 (6%)	12 (3%)	12 (3%)	6 (2%)	11 (3%)	398/723 (55%)
9 Psykiatere	120 (30%)	55 (14%)	61 (15%)	35 (9%)	51 (13%)	15 (4%)	19 (5%)	17 (4%)	12 (3%)	13 (3%)	398/723 (55%)
10 Pædiatere	37 (9%)	22 (6%)	30 (8%)	22 (6%)	56 (14%)	50 (13%)	58 (15%)	52 (13%)	32 (8%)	39 (10%)	398/723 (55%)



6. Hvem er de mest humoristiske?

Giv karakter til hvert speciale fra 1 til 10, hvor 1 er mindst og 10 er mest

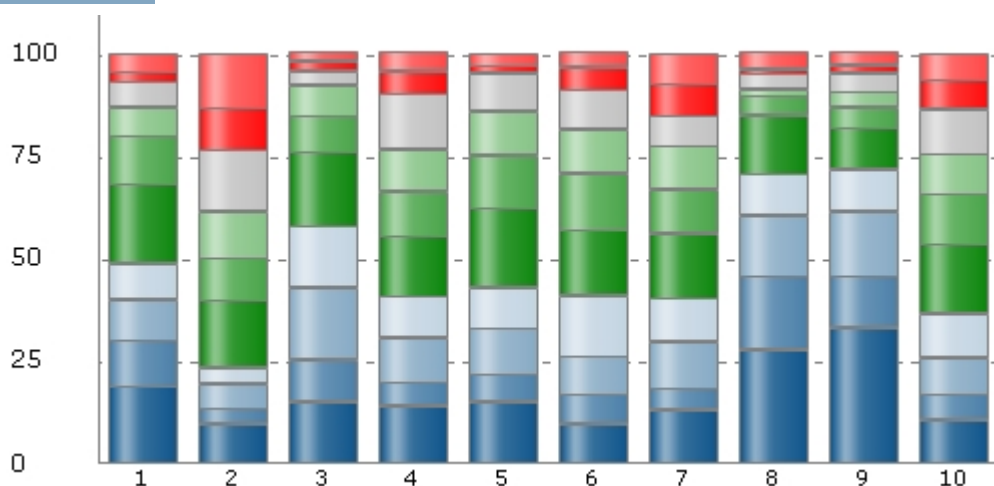
	1	2	3	4	5	6	7	8	9	10	Responses
1 Almen Medicinere	39 (12%)	20 (6%)	35 (11%)	27 (8%)	55 (17%)	50 (15%)	38 (12%)	33 (10%)	17 (5%)	14 (4%)	328/723 (45%)
2 Anæstesiologer	26 (8%)	14 (4%)	24 (7%)	20 (6%)	40 (12%)	43 (13%)	50 (15%)	44 (13%)	41 (12%)	26 (8%)	328/723 (45%)
3 Endokrinologer	39 (12%)	33 (10%)	56 (17%)	46 (14%)	59 (18%)	36 (11%)	31 (9%)	10 (3%)	10 (3%)	8 (2%)	328/723 (45%)
4 Gynækologer/obstetrikere	27 (8%)	20 (6%)	34 (10%)	51 (16%)	60 (18%)	37 (11%)	30 (9%)	44 (13%)	14 (4%)	11 (3%)	328/723 (45%)
5 Interne medicinere	30 (9%)	25 (8%)	34 (10%)	34 (10%)	66 (20%)	46 (14%)	38 (12%)	29 (9%)	17 (5%)	9 (3%)	328/723 (45%)
6 Organkirurger	20 (6%)	17 (5%)	25 (8%)	22 (7%)	46 (14%)	45 (14%)	49 (15%)	48 (15%)	38 (12%)	18 (5%)	328/723 (45%)
7 Ortopædkirurger	21 (6%)	22 (7%)	27 (8%)	21 (6%)	41 (12%)	26 (8%)	50 (15%)	49 (15%)	39 (12%)	32 (10%)	328/723 (45%)
8 Patologer	49 (15%)	44 (13%)	43 (13%)	34 (10%)	51 (16%)	21 (6%)	27 (8%)	25 (8%)	13 (4%)	21 (6%)	328/723 (45%)
9 Psykiatere	67 (20%)	48 (15%)	35 (11%)	31 (9%)	44 (13%)	29 (9%)	24 (7%)	16 (5%)	16 (5%)	18 (5%)	328/723 (45%)
10 Pædiatere	30 (9%)	36 (11%)	35 (11%)	47 (14%)	54 (16%)	47 (14%)	34 (10%)	19 (6%)	16 (5%)	10 (3%)	328/723 (45%)



7. Hvem er de mest sexede?

Giv karakter til hvert speciale fra 1 til 10, hvor 1 er mindst og 10 er mest

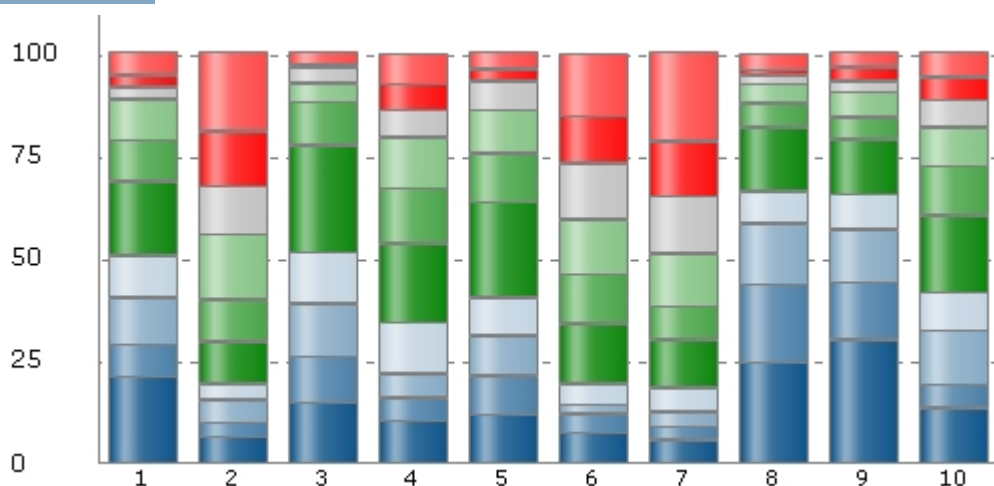
	1	2	3	4	5	6	7	8	9	10	Responses
1 Almen Medicinere	55 (19%)	33 (11%)	29 (10%)	25 (9%)	57 (19%)	35 (12%)	20 (7%)	18 (6%)	8 (3%)	13 (4%)	293/723 (41%)
2 Anæstesiologer	28 (10%)	11 (4%)	18 (6%)	11 (4%)	48 (16%)	31 (11%)	33 (11%)	43 (15%)	31 (11%)	39 (13%)	293/723 (41%)
3 Endokrinologer	44 (15%)	30 (10%)	51 (17%)	44 (15%)	53 (18%)	26 (9%)	22 (8%)	9 (3%)	7 (2%)	7 (2%)	293/723 (41%)
4 Gynækologer/obstetrikere	41 (14%)	17 (6%)	32 (11%)	29 (10%)	43 (15%)	32 (11%)	30 (10%)	39 (13%)	17 (6%)	13 (4%)	293/723 (41%)
5 Interne medicinere	44 (15%)	19 (6%)	33 (11%)	29 (10%)	57 (19%)	38 (13%)	31 (11%)	27 (9%)	5 (2%)	10 (3%)	293/723 (41%)
6 Organkirurger	28 (10%)	21 (7%)	28 (10%)	43 (15%)	46 (16%)	41 (14%)	31 (11%)	28 (10%)	16 (5%)	11 (4%)	293/723 (41%)
7 Ortopædkirurger	38 (13%)	15 (5%)	34 (12%)	31 (11%)	46 (16%)	31 (11%)	31 (11%)	22 (8%)	23 (8%)	22 (8%)	293/723 (41%)
8 Patologer	81 (28%)	52 (18%)	44 (15%)	29 (10%)	42 (14%)	14 (5%)	5 (2%)	11 (4%)	3 (1%)	12 (4%)	293/723 (41%)
9 Psykiatere	97 (33%)	36 (12%)	46 (16%)	30 (10%)	30 (10%)	15 (5%)	11 (4%)	13 (4%)	5 (2%)	10 (3%)	293/723 (41%)
10 Pædiatere	31 (11%)	18 (6%)	26 (9%)	31 (11%)	50 (17%)	36 (12%)	29 (10%)	32 (11%)	21 (7%)	19 (6%)	293/723 (41%)



8. Hvem flirter mest?

Giv karakter til hvert speciale fra 1 til 10, hvor 1 er mindst og 10 er mest

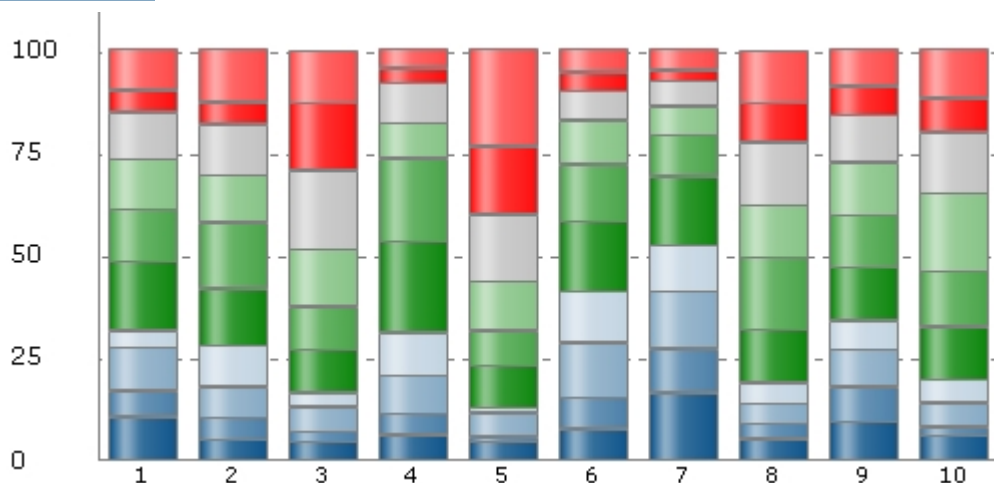
	1	2	3	4	5	6	7	8	9	10	Responses
1 Almen Medicinere	54 (21%)	21 (8%)	29 (11%)	26 (10%)	46 (18%)	26 (10%)	26 (10%)	7 (3%)	7 (3%)	15 (6%)	257/723 (36%)
2 Anæstesiologer	17 (7%)	9 (4%)	14 (5%)	10 (4%)	26 (10%)	26 (10%)	41 (16%)	31 (12%)	34 (13%)	49 (19%)	257/723 (36%)
3 Endokrinologer	38 (15%)	29 (11%)	33 (13%)	32 (12%)	67 (26%)	27 (11%)	12 (5%)	9 (4%)	2 (1%)	8 (3%)	257/723 (36%)
4 Gynækologer/obstetrikere	27 (11%)	14 (5%)	15 (6%)	32 (12%)	49 (19%)	35 (14%)	32 (12%)	17 (7%)	17 (7%)	19 (7%)	257/723 (36%)
5 Interne medicinere	31 (12%)	24 (9%)	25 (10%)	23 (9%)	60 (23%)	31 (12%)	27 (11%)	18 (7%)	7 (3%)	11 (4%)	257/723 (36%)
6 Organkirurger	19 (7%)	12 (5%)	6 (2%)	13 (5%)	37 (14%)	31 (12%)	34 (13%)	35 (14%)	30 (12%)	40 (16%)	257/723 (36%)
7 Ortopædkirurger	15 (6%)	8 (3%)	9 (4%)	15 (6%)	30 (12%)	21 (8%)	33 (13%)	36 (14%)	34 (13%)	56 (22%)	257/723 (36%)
8 Patologer	63 (25%)	49 (19%)	38 (15%)	20 (8%)	40 (16%)	15 (6%)	12 (5%)	6 (2%)	3 (1%)	11 (4%)	257/723 (36%)
9 Psykiatere	77 (30%)	36 (14%)	33 (13%)	22 (9%)	35 (14%)	13 (5%)	16 (6%)	7 (3%)	8 (3%)	10 (4%)	257/723 (36%)
10 Pædiatere	34 (13%)	15 (6%)	34 (13%)	24 (9%)	48 (19%)	31 (12%)	24 (9%)	17 (7%)	14 (5%)	16 (6%)	257/723 (36%)



9. Hvem er de mest intelligente?

Giv karakter til hvert speciale fra 1 til 10, hvor 1 er mindst og 10 er mest

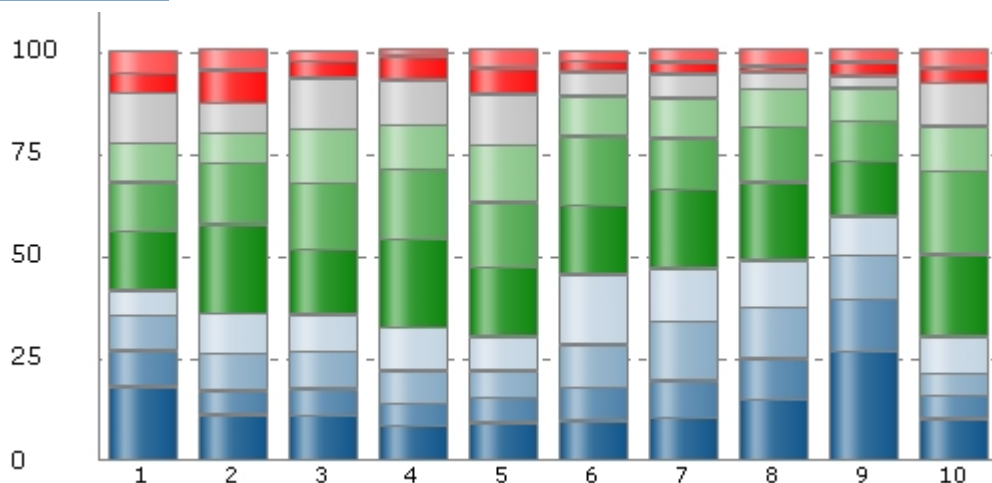
	1	2	3	4	5	6	7	8	9	10	Responses
1 Almen Medicinere	26 (11%)	15 (6%)	26 (11%)	10 (4%)	41 (17%)	31 (13%)	30 (12%)	28 (11%)	13 (5%)	24 (10%)	244/723 (34%)
2 Anæstesiologer	12 (5%)	14 (6%)	18 (7%)	24 (10%)	34 (14%)	39 (16%)	28 (11%)	30 (12%)	13 (5%)	32 (13%)	244/723 (34%)
3 Endokrinologer	11 (5%)	6 (2%)	15 (6%)	8 (3%)	26 (11%)	25 (10%)	34 (14%)	47 (19%)	40 (16%)	32 (13%)	244/723 (34%)
4 Gynækologer/obstetrikere	15 (6%)	13 (5%)	23 (9%)	25 (10%)	54 (22%)	49 (20%)	21 (9%)	24 (10%)	9 (4%)	11 (5%)	244/723 (34%)
5 Interne medicinere	11 (5%)	3 (1%)	14 (6%)	3 (1%)	25 (10%)	21 (9%)	29 (12%)	40 (16%)	40 (16%)	58 (24%)	244/723 (34%)
6 Organkirurger	19 (8%)	18 (7%)	33 (14%)	30 (12%)	42 (17%)	34 (14%)	26 (11%)	17 (7%)	11 (5%)	14 (6%)	244/723 (34%)
7 Ortopædkirurger	40 (16%)	26 (11%)	34 (14%)	28 (11%)	41 (17%)	24 (10%)	17 (7%)	15 (6%)	6 (2%)	13 (5%)	244/723 (34%)
8 Patologer	13 (5%)	9 (4%)	12 (5%)	12 (5%)	32 (13%)	43 (18%)	31 (13%)	37 (15%)	23 (9%)	32 (13%)	244/723 (34%)
9 Psykiatere	23 (9%)	21 (9%)	22 (9%)	17 (7%)	32 (13%)	31 (13%)	31 (13%)	28 (11%)	17 (7%)	22 (9%)	244/723 (34%)
10 Pædiatere	15 (6%)	5 (2%)	14 (6%)	14 (6%)	31 (13%)	33 (14%)	47 (19%)	36 (15%)	20 (8%)	29 (12%)	244/723 (34%)



10. Hvem er de mest velklædte?

Giv karakter til hvert speciale fra 1 til 10, hvor 1 er mindst og 10 er mest

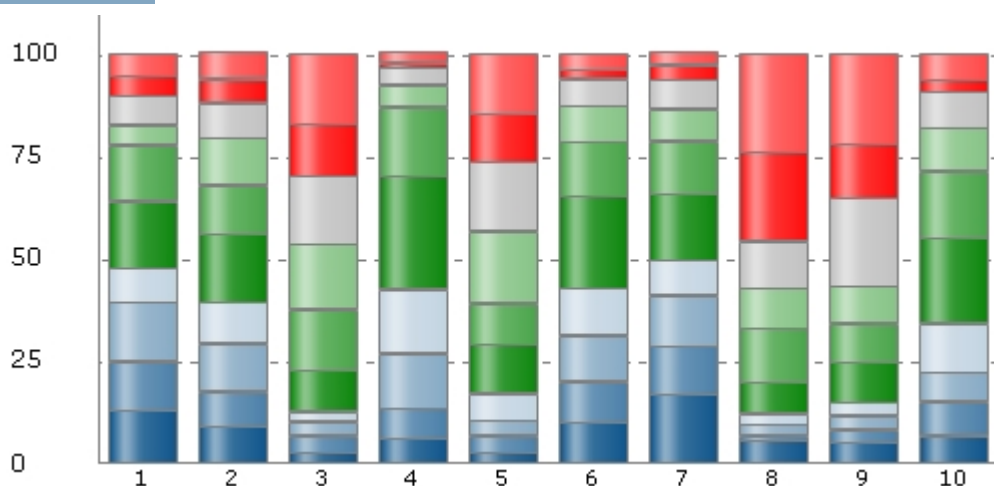
	1	2	3	4	5	6	7	8	9	10	Responses
1 Almen Medicinere	43 (18%)	21 (9%)	21 (9%)	15 (6%)	35 (14%)	29 (12%)	23 (10%)	30 (12%)	12 (5%)	13 (5%)	242/723 (33%)
2 Anæstesiologer	27 (11%)	14 (6%)	22 (9%)	24 (10%)	52 (21%)	36 (15%)	18 (7%)	18 (7%)	19 (8%)	12 (5%)	242/723 (33%)
3 Endokrinologer	26 (11%)	16 (7%)	22 (9%)	22 (9%)	38 (16%)	39 (16%)	32 (13%)	30 (12%)	10 (4%)	7 (3%)	242/723 (33%)
4 Gynækologer/obstetrikere	21 (9%)	13 (5%)	19 (8%)	25 (10%)	52 (21%)	42 (17%)	26 (11%)	26 (11%)	14 (6%)	4 (2%)	242/723 (33%)
5 Interne medicinere	22 (9%)	15 (6%)	16 (7%)	20 (8%)	41 (17%)	38 (16%)	34 (14%)	30 (12%)	15 (6%)	11 (5%)	242/723 (33%)
6 Organkirurger	23 (10%)	20 (8%)	25 (10%)	41 (17%)	41 (17%)	41 (17%)	23 (10%)	14 (6%)	7 (3%)	7 (3%)	242/723 (33%)
7 Ortopædkirurger	25 (10%)	22 (9%)	35 (14%)	31 (13%)	47 (19%)	30 (12%)	23 (10%)	14 (6%)	7 (3%)	8 (3%)	242/723 (33%)
8 Patologer	36 (15%)	24 (10%)	30 (12%)	28 (12%)	46 (19%)	32 (13%)	23 (10%)	10 (4%)	3 (1%)	10 (4%)	242/723 (33%)
9 Psykiatere	64 (26%)	31 (13%)	26 (11%)	23 (10%)	32 (13%)	24 (10%)	19 (8%)	7 (3%)	8 (3%)	8 (3%)	242/723 (33%)
10 Pædiatere	24 (10%)	14 (6%)	13 (5%)	22 (9%)	48 (20%)	49 (20%)	27 (11%)	25 (10%)	9 (4%)	11 (5%)	242/723 (33%)



11. Hvem er de mest nørdede?

Giv karakter til hvert speciale fra 1 til 10, hvor 1 er mindst og 10 er mest

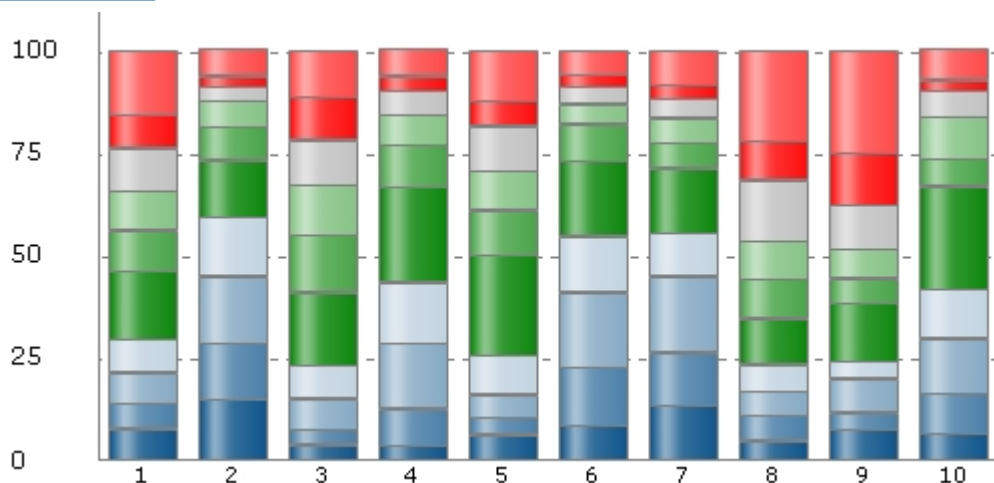
	1	2	3	4	5	6	7	8	9	10	Responses
1 Almen Medicinere	30 (13%)	28 (12%)	34 (14%)	20 (9%)	38 (16%)	32 (14%)	11 (5%)	17 (7%)	12 (5%)	13 (6%)	235/723 (33%)
2 Anæstesiologer	21 (9%)	20 (9%)	27 (11%)	24 (10%)	39 (17%)	28 (12%)	27 (11%)	20 (9%)	13 (6%)	16 (7%)	235/723 (33%)
3 Endokrinologer	6 (3%)	10 (4%)	8 (3%)	5 (2%)	24 (10%)	35 (15%)	37 (16%)	39 (17%)	30 (13%)	41 (17%)	235/723 (33%)
4 Gynækologer/obstetrikere	14 (6%)	18 (8%)	31 (13%)	36 (15%)	65 (28%)	40 (17%)	12 (5%)	10 (4%)	3 (1%)	6 (3%)	235/723 (33%)
5 Interne medicinere	6 (3%)	10 (4%)	9 (4%)	15 (6%)	28 (12%)	23 (10%)	41 (17%)	40 (17%)	28 (12%)	35 (15%)	235/723 (33%)
6 Organkirurger	23 (10%)	24 (10%)	26 (11%)	27 (11%)	53 (23%)	31 (13%)	21 (9%)	15 (6%)	5 (2%)	10 (4%)	235/723 (33%)
7 Ortopædkirurger	39 (17%)	28 (12%)	29 (12%)	20 (9%)	38 (16%)	30 (13%)	18 (8%)	17 (7%)	9 (4%)	7 (3%)	235/723 (33%)
8 Patologer	13 (6%)	3 (1%)	6 (3%)	6 (3%)	18 (8%)	31 (13%)	23 (10%)	27 (11%)	51 (22%)	57 (24%)	235/723 (33%)
9 Psykiatere	12 (5%)	7 (3%)	8 (3%)	8 (3%)	23 (10%)	22 (9%)	21 (9%)	51 (22%)	31 (13%)	52 (22%)	235/723 (33%)
10 Pædiatere	16 (7%)	19 (8%)	17 (7%)	28 (12%)	49 (21%)	38 (16%)	25 (11%)	21 (9%)	7 (3%)	15 (6%)	235/723 (33%)



12. Hvem er de kedeligste?

Giv karakter til hvert speciale fra 1 til 10, hvor 1 er mindst og 10 er mest

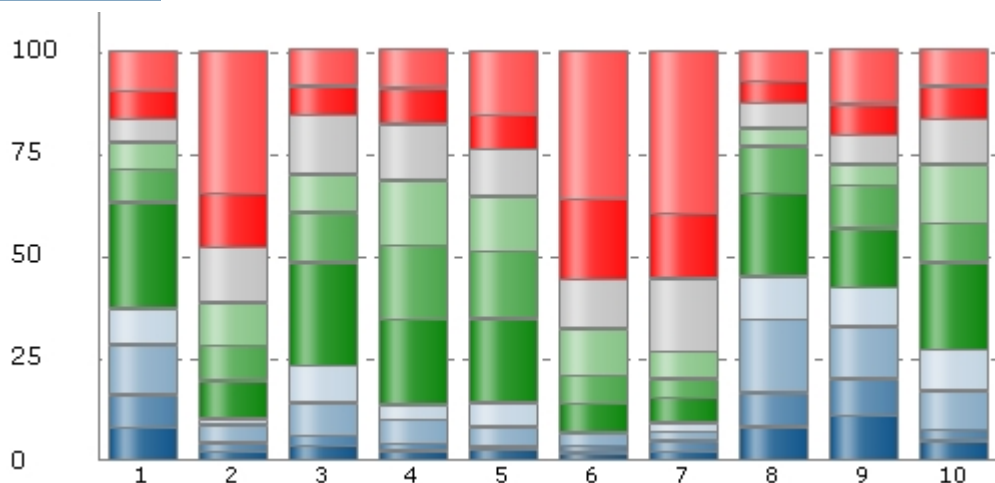
	1	2	3	4	5	6	7	8	9	10	Responses
1 Almen Medicinere	18 (8%)	14 (6%)	17 (7%)	19 (8%)	39 (17%)	23 (10%)	22 (9%)	24 (10%)	19 (8%)	37 (16%)	232/723 (32%)
2 Anæstesiologer	34 (15%)	32 (14%)	38 (16%)	33 (14%)	32 (14%)	19 (8%)	15 (6%)	8 (3%)	6 (3%)	15 (6%)	232/723 (32%)
3 Endokrinologer	8 (3%)	9 (4%)	18 (8%)	19 (8%)	41 (18%)	32 (14%)	29 (12%)	25 (11%)	24 (10%)	27 (12%)	232/723 (32%)
4 Gynækologer/obstetrikere	8 (3%)	21 (9%)	37 (16%)	34 (15%)	54 (23%)	24 (10%)	17 (7%)	14 (6%)	8 (3%)	15 (6%)	232/723 (32%)
5 Interne medicinere	14 (6%)	10 (4%)	13 (6%)	22 (9%)	57 (25%)	25 (11%)	22 (9%)	26 (11%)	14 (6%)	29 (12%)	232/723 (32%)
6 Organkirurger	20 (9%)	33 (14%)	42 (18%)	31 (13%)	43 (19%)	21 (9%)	11 (5%)	10 (4%)	7 (3%)	14 (6%)	232/723 (32%)
7 Ortopædkirurger	31 (13%)	30 (13%)	43 (19%)	24 (10%)	37 (16%)	14 (6%)	14 (6%)	11 (5%)	8 (3%)	20 (9%)	232/723 (32%)
8 Patologer	11 (5%)	14 (6%)	14 (6%)	15 (6%)	26 (11%)	22 (9%)	22 (9%)	34 (15%)	22 (9%)	52 (22%)	232/723 (32%)
9 Psykiatere	17 (7%)	10 (4%)	19 (8%)	10 (4%)	33 (14%)	14 (6%)	16 (7%)	25 (11%)	30 (13%)	58 (25%)	232/723 (32%)
10 Pædiatere	15 (6%)	23 (10%)	31 (13%)	28 (12%)	58 (25%)	15 (6%)	24 (10%)	15 (6%)	6 (3%)	17 (7%)	232/723 (32%)



13. Hvem har de største egoer?

Giv karakter til hvert speciale fra 1 til 10, hvor 1 er mindst og 10 er mest

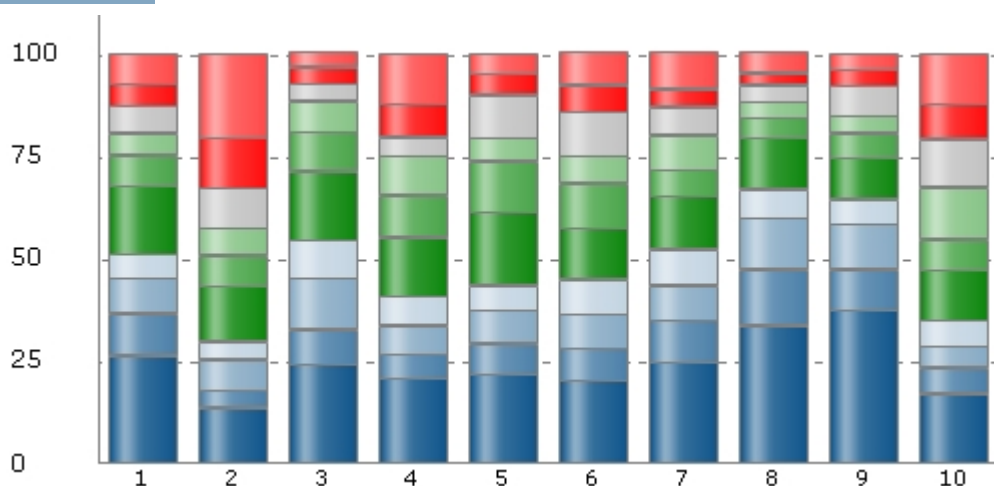
	1	2	3	4	5	6	7	8	9	10	Responses
1 Almen Medicinere	18 (8%)	19 (8%)	28 (12%)	20 (9%)	59 (26%)	19 (8%)	15 (7%)	13 (6%)	16 (7%)	23 (10%)	230/723 (32%)
2 Anæstesiologer	5 (2%)	5 (2%)	10 (4%)	3 (1%)	21 (9%)	20 (9%)	24 (10%)	31 (13%)	31 (13%)	80 (35%)	230/723 (32%)
3 Endokrinologer	8 (3%)	6 (3%)	18 (8%)	21 (9%)	58 (25%)	28 (12%)	21 (9%)	33 (14%)	16 (7%)	21 (9%)	230/723 (32%)
4 Gynækologer/obstetrikere	5 (2%)	4 (2%)	14 (6%)	8 (3%)	48 (21%)	42 (18%)	36 (16%)	31 (13%)	20 (9%)	22 (10%)	230/723 (32%)
5 Interne medicinere	6 (3%)	2 (1%)	11 (5%)	13 (6%)	47 (20%)	38 (17%)	31 (13%)	26 (11%)	20 (9%)	36 (16%)	230/723 (32%)
6 Organkirurger	4 (2%)	4 (2%)	7 (3%)	1 (0%)	16 (7%)	16 (7%)	26 (11%)	27 (12%)	45 (20%)	84 (37%)	230/723 (32%)
7 Ortopædkirurger	5 (2%)	6 (3%)	5 (2%)	5 (2%)	14 (6%)	11 (5%)	15 (7%)	41 (18%)	37 (16%)	91 (40%)	230/723 (32%)
8 Patologer	19 (8%)	19 (8%)	41 (18%)	24 (10%)	47 (20%)	26 (11%)	10 (4%)	14 (6%)	13 (6%)	17 (7%)	230/723 (32%)
9 Psykiatere	25 (11%)	21 (9%)	29 (13%)	22 (10%)	33 (14%)	24 (10%)	12 (5%)	16 (7%)	17 (7%)	31 (13%)	230/723 (32%)
10 Pædiatere	11 (5%)	6 (3%)	22 (10%)	23 (10%)	49 (21%)	22 (10%)	33 (14%)	25 (11%)	18 (8%)	21 (9%)	230/723 (32%)



14. Blandt hvilken gruppe vil du helst finde en elsker?

Giv karakter til hvert speciale fra 1 til 10, hvor 1 er mindst og 10 er mest

	1	2	3	4	5	6	7	8	9	10	Responses
1 Almen Medicinere	60 (26%)	23 (10%)	20 (9%)	14 (6%)	38 (17%)	17 (7%)	12 (5%)	15 (7%)	13 (6%)	17 (7%)	229/723 (32%)
2 Anæstesiologer	31 (14%)	10 (4%)	17 (7%)	10 (4%)	31 (14%)	17 (7%)	15 (7%)	23 (10%)	28 (12%)	47 (21%)	229/723 (32%)
3 Endokrinologer	55 (24%)	19 (8%)	29 (13%)	22 (10%)	38 (17%)	22 (10%)	17 (7%)	10 (4%)	9 (4%)	8 (3%)	229/723 (32%)
4 Gynækologer/obstetrikere	47 (21%)	14 (6%)	16 (7%)	16 (7%)	33 (14%)	23 (10%)	22 (10%)	11 (5%)	18 (8%)	29 (13%)	229/723 (32%)
5 Interne medicinere	50 (22%)	17 (7%)	18 (8%)	14 (6%)	41 (18%)	28 (12%)	13 (6%)	24 (10%)	12 (5%)	12 (5%)	229/723 (32%)
6 Organkirurger	46 (20%)	18 (8%)	19 (8%)	19 (8%)	29 (13%)	25 (11%)	15 (7%)	25 (11%)	15 (7%)	18 (8%)	229/723 (32%)
7 Ortopædkirurger	56 (24%)	24 (10%)	19 (8%)	20 (9%)	30 (13%)	15 (7%)	19 (8%)	15 (7%)	10 (4%)	21 (9%)	229/723 (32%)
8 Patologer	77 (34%)	31 (14%)	29 (13%)	16 (7%)	28 (12%)	12 (5%)	9 (4%)	9 (4%)	6 (3%)	12 (5%)	229/723 (32%)
9 Psykiatere	85 (37%)	23 (10%)	25 (11%)	14 (6%)	23 (10%)	14 (6%)	10 (4%)	17 (7%)	9 (4%)	9 (4%)	229/723 (32%)
10 Pædiatere	39 (17%)	14 (6%)	12 (5%)	15 (7%)	28 (12%)	17 (7%)	29 (13%)	26 (11%)	20 (9%)	29 (13%)	229/723 (32%)



15. Blandt hvilken gruppe vil du helst finde en mand/kone?

Giv karakter til hvert speciale fra 1 til 10, hvor 1 er mindst og 10 er mest

	1	2	3	4	5	6	7	8	9	10	Responses
1 Almen Medicinere	47 (21%)	11 (5%)	13 (6%)	12 (5%)	31 (14%)	16 (7%)	17 (7%)	19 (8%)	24 (11%)	38 (17%)	228/723 (32%)
2 Anæstesiologer	50 (22%)	26 (11%)	18 (8%)	16 (7%)	37 (16%)	14 (6%)	19 (8%)	19 (8%)	10 (4%)	19 (8%)	228/723 (32%)
3 Endokrinologer	50 (22%)	21 (9%)	19 (8%)	12 (5%)	43 (19%)	21 (9%)	13 (6%)	20 (9%)	15 (7%)	14 (6%)	228/723 (32%)
4 Gynækologer/obstetrikere	48 (21%)	27 (12%)	14 (6%)	21 (9%)	43 (19%)	14 (6%)	17 (7%)	13 (6%)	11 (5%)	20 (9%)	228/723 (32%)
5 Interne medicinere	42 (18%)	19 (8%)	11 (5%)	12 (5%)	44 (19%)	20 (9%)	15 (7%)	23 (10%)	18 (8%)	24 (11%)	228/723 (32%)
6 Organkirurger	57 (25%)	26 (11%)	26 (11%)	17 (7%)	35 (15%)	21 (9%)	7 (3%)	15 (7%)	9 (4%)	15 (7%)	228/723 (32%)
7 Ortopædkirurger	67 (29%)	32 (14%)	15 (7%)	19 (8%)	33 (14%)	13 (6%)	15 (7%)	14 (6%)	4 (2%)	16 (7%)	228/723 (32%)
8 Patologer	66 (29%)	30 (13%)	24 (11%)	15 (7%)	36 (16%)	16 (7%)	9 (4%)	12 (5%)	7 (3%)	13 (6%)	228/723 (32%)
9 Psykiatere	88 (39%)	27 (12%)	20 (9%)	10 (4%)	31 (14%)	15 (7%)	11 (5%)	8 (4%)	3 (1%)	15 (7%)	228/723 (32%)
10 Pædiatere	33 (14%)	10 (4%)	12 (5%)	16 (7%)	30 (13%)	24 (11%)	22 (10%)	23 (10%)	25 (11%)	33 (14%)	228/723 (32%)

